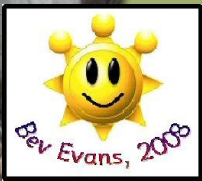


# All about flowers

Review the parts of a flower and  
all about pollination



# All about flowers

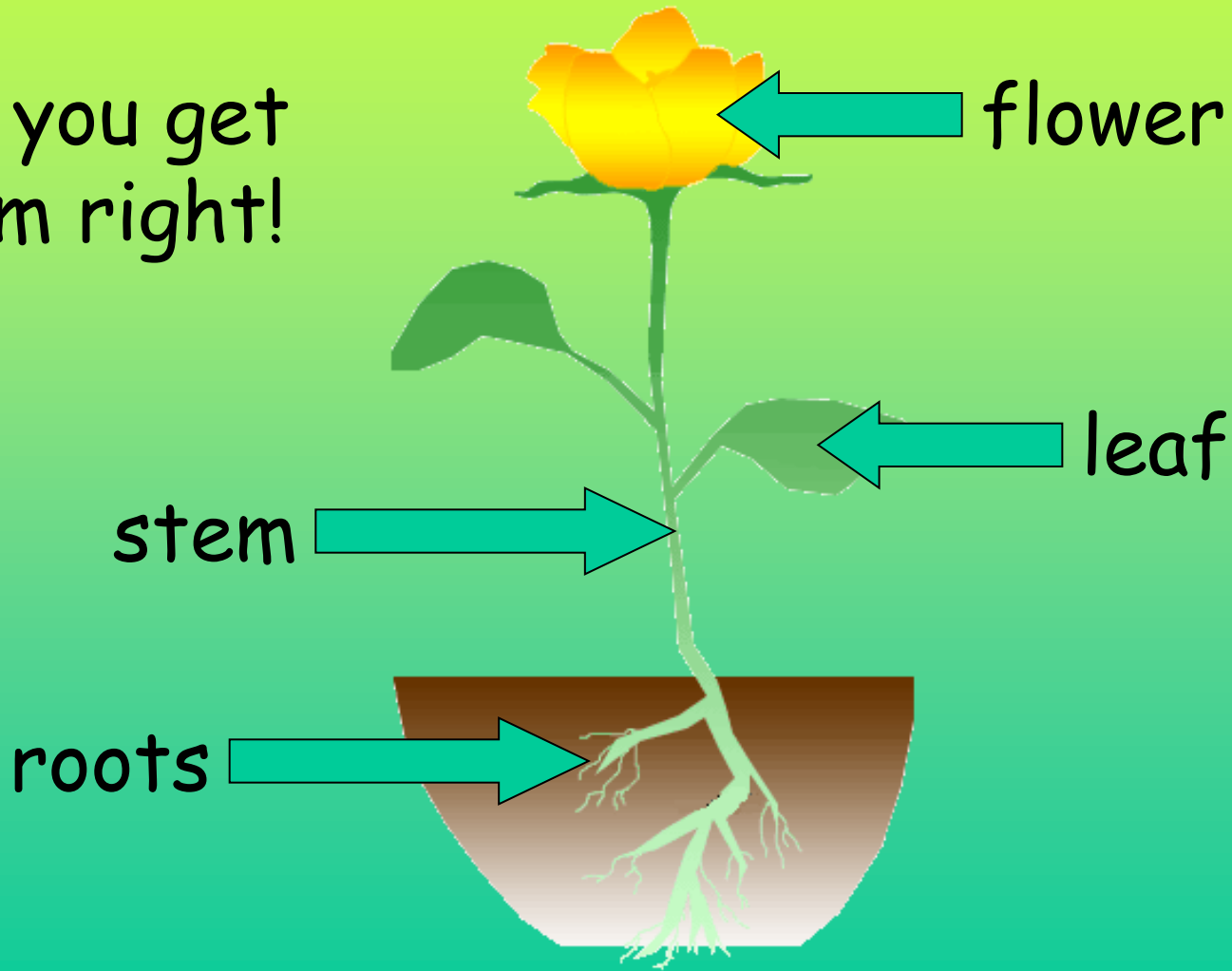
- Flowers are vital to the reproduction of flowering plants.
- Flowers are made up of several different parts.
- Each part is important in it's own special way.



# Parts of a flowering plant

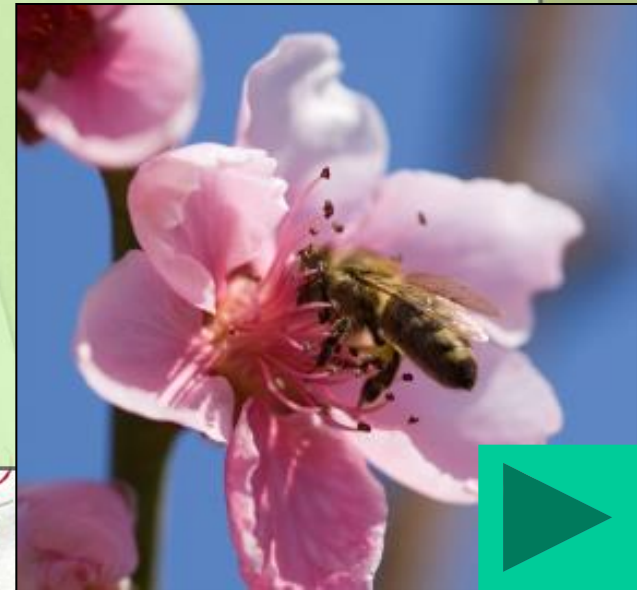
Can you name all the parts of this plant? Click on the arrows to see if you are correct!

Did you get them right!



# A little information about Pollination

- In order to produce a new plant many flowering plants need to be **pollinated**.
- Let's learn the parts of the flower - then we can find out more about pollination.



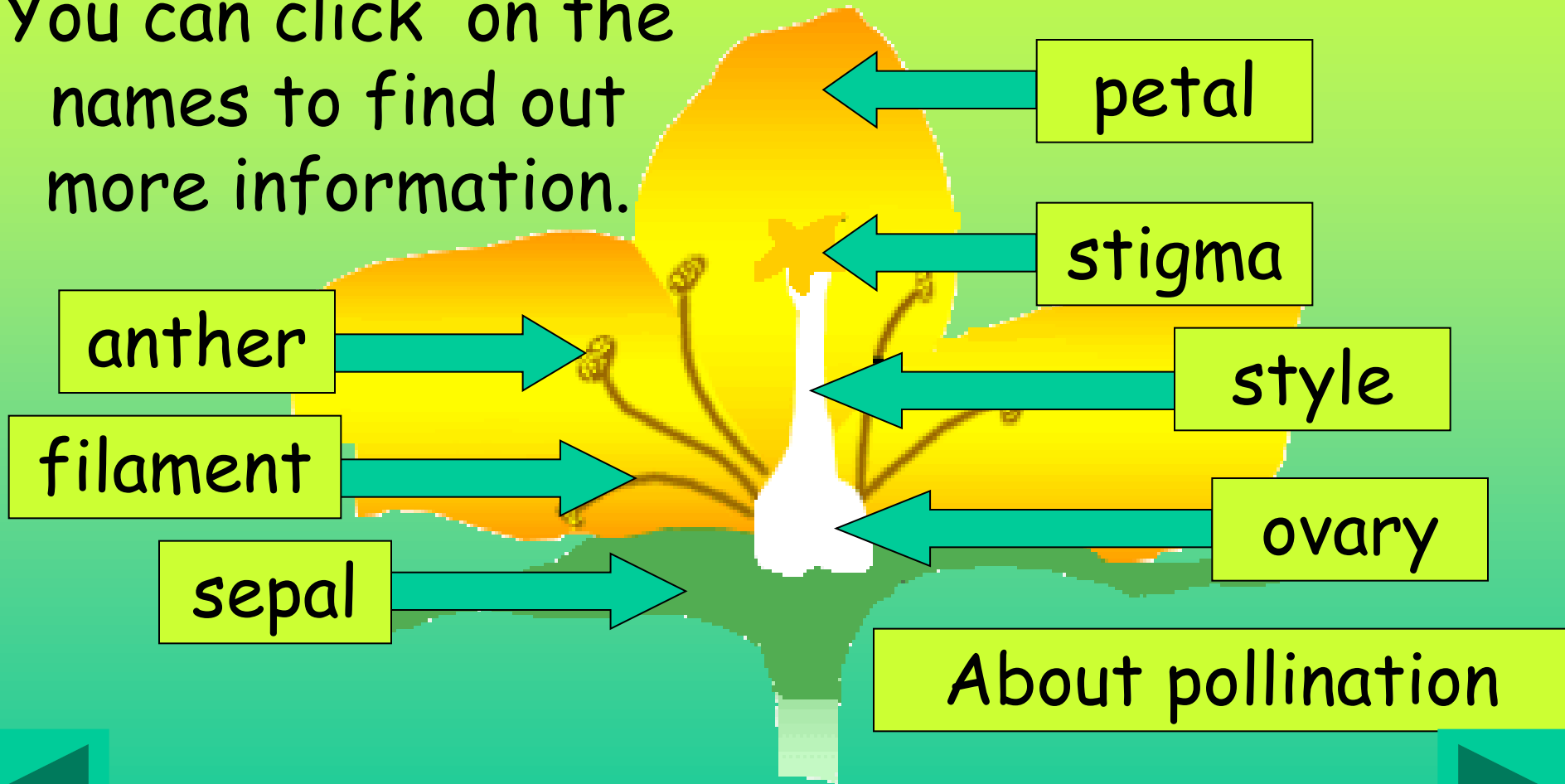
 index slide



# Parts of the flower

Now we are going to look more closely at the flower. Click the arrows to find the names.

You can click on the names to find out more information.



# Petal

- The **petal** attracts insects to visit the flower.
- The colours that we see in the flower petals are quite different to those seen by insects, with their specialised eyes.



[Click here to go back to 'The Parts of a Flower'](#)

# Stigma

- The **stigma** receives the **pollen** from visiting insects.

stigma

- It is one of the female parts of a flower. The others are the **style** and the **ovary**.



[Click here to go back to 'The Parts of a Flower'](#)

# Style

- The **style** leads down to **ovary**.
- It is another of the female parts of a flower.



style

A diagram showing a yellow rectangular box with the word "style" in black text. A yellow arrow points downwards from the bottom of the box towards the center of a pink lily flower in the image below.



[Click here to go back to 'The Parts of a Flower'](#)



# Ovary

- The **ovary** is located at the base of the flower
- The three female parts of a flower are, together, called the **pistil** or the **carpel**.
- The female parts of a flower make the **seeds**.

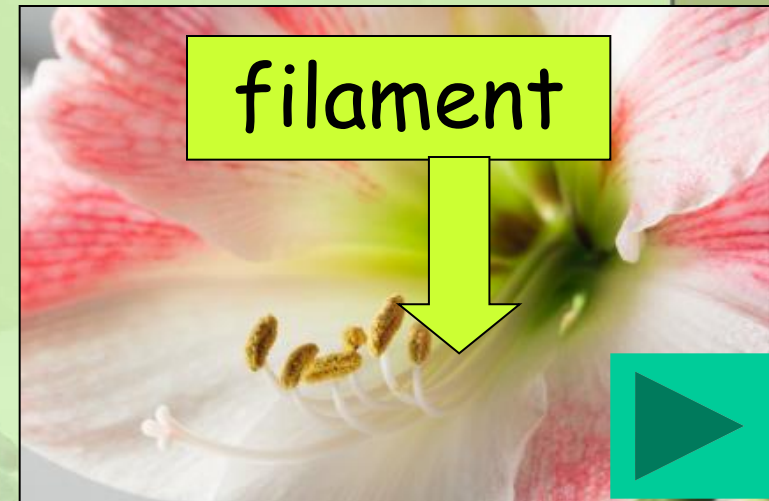


ovary

[Click here to go back to 'The Parts of a Flower'](#)

# Filament

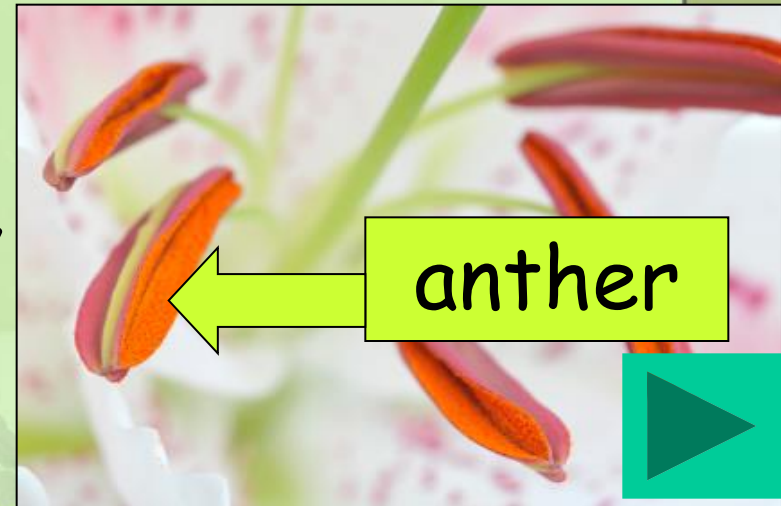
- The **filament** is one of the male parts of a flower.
- The other male part is called the **anther**.
- Together they are called the **stamen**.



[Click here to go back to 'The Parts of a Flower'](#)

# Anther

- The **anther** is one of the male parts of a flower.
- The shape and size of the **anther** will attract the correct insects.
- The **anther** and **filament** make the pollen. Together, they are called the **stamen**.

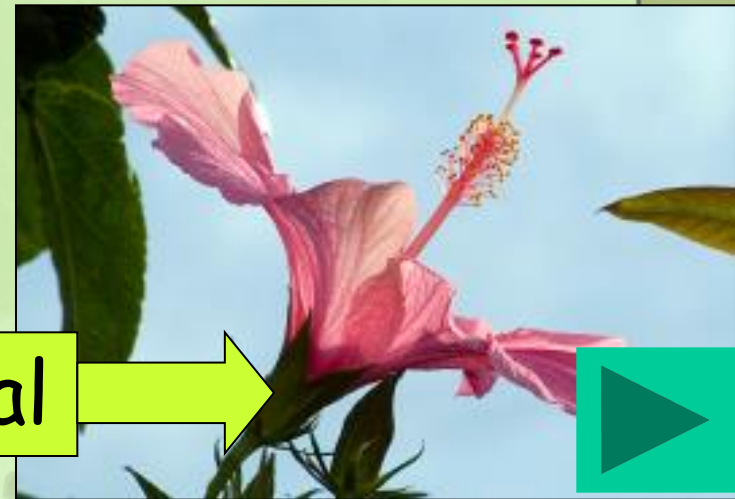
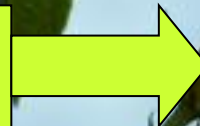


[Click here to go back to 'The Parts of a Flower'](#)

# Sepal

- The **sepal** is usually green.
- It is the part of the flower that protects the **bud**.
- It is not part of the pollination process.

sepal



[Click here to go back to 'The Parts of a Flower'](#)